

SUMMER 2020

NO. 41

lifehouse



Stephanie

Chris

Allison

Dante

Richard

Ron

Left to Right: Photo 1 & 3 by David Charnack

EVERYDAY HEROES

In these unprecedented times, many of us are missing our old routines and adjusting to new ones. Lifehouse is following the recommended guidelines so that we can continue to support our residents with developmental disabilities and everyone can remain safe and healthy. It has been a challenge adjusting to new routines, but our staff and the people we support remain vigilant. About a dozen of Lifehouse residents are essential workers in our community and have been working throughout Shelter-in-Place. We are in awe of them! They face new challenges every day in the workplace and have overcome them with the support of our Direct Support Professionals and job supervisors.

Many of our residents who are essential workers are employed by grocery stores and are proud to support their customers with this essential service. Lifehouse residents Allison, Stephanie, and Dante work at Safeway, where they follow all protocols to protect the community with daily temperature and wellness checks and wearing masks. Allison reports that although it can be scary, she feels a sense of responsibility to the customers. Her counselor, Carol, and work supervisor provide suggestions on maintaining safe habits for herself and the community. She is proud to be taking part in something essential for the community so that people can live their lives. Housemate Stephanie adds that while the job is stressful, she is grateful to be earning a living and helping people bring their groceries out to their cars. Dante tells us that during the beginning of Shelter-in-Place, he felt stressed due to the hastiness of the shopping environment. However, a few weeks in, many people approached him and thanked him for his service. He was surprised to be receiving so many compliments about his work. In the end, he feels good about being able to support the community at this time and now feels less stressed. We are so proud of the work that our residents are doing. They are truly everyday heroes! **Please stay tuned for blog posts about our other essential workers!**



OUR MISSION IS TO ENABLE THE PEOPLE WE SUPPORT TO LIVE A FULL LIFE

THE PRESIDENT'S CORNER



LIFEHOUSE BOARD OF DIRECTORS

Stephen Meeker, Chair
 Eric Aanes, Vice Chair
 Doug Clough, Treasurer
 James Ricks, Secretary
 Joseph Spinelli, Immediate Past Chair
 Nancy Dow Moody, Lifehouse President & CEO
 Al Brayton
 Lia Economopoulos
 Daniel Engel
 Andrea Henderson
 Mark Jackson
 Susan McFadden
 Paul Smith
 Justin Tedford

ADVISORY COUNCIL

Mary Jane Burke, Marin County Superintendent
 Patty Garbarino, Marin Sanitary Service
 Congressman Jared Huffman
 Marc Loupé
 Patricia Kendall, Kaiser Permanente
 Assemblymember Marc Levine
 James Shorter
 Paul Brannan, Charles Schwab & Co

Dear Friends,

It is hard to believe that we are more than halfway through 2020! Despite the many challenges we have all faced in the past 6 months, the 400+ Lifehouse staff have adapted and continue to provide critical support every day to our residents. Their work keeping people safe and engaged is of primary importance to all of us at Lifehouse. I am impressed and proud of their innovation and resilience. Day and work programs are closed, and our staff are working extra hours to fill the gap during this time. I've heard of hikes, home movie nights, puzzle & game nights, hitting golf balls at the driving range and on-line exercising, dancing, and meditation classes. Lifehouse provides the appropriate PPE (Personal Protective Equipment) and encourages staying six feet apart. We are adjusting to new routines. This is a tremendous responsibility and our staff are stepping up to keep everyone at Lifehouse moving forward!

In addition to our usual staff meetings and trainings, we have increased the number of universal precaution classes and instituted a few new topics: meditation and wellness training, and a new two-hour conversation on diversity, race and culture. These are all offered via Zoom and have been well received and attended.

Thank you all for supporting Lifehouse during these challenging times. Your support makes it possible for us to provide the additional services necessary to more individuals in our community, hire and train qualified staff, and maintain our homes. As we face new challenges, please help us ensure that Lifehouse remains strong now and in the future. I am grateful for all that you do for Lifehouse and look forward to a day when we can come together again and celebrate our wonderful community.

Please stay safe and wear your mask!

Warmest wishes,

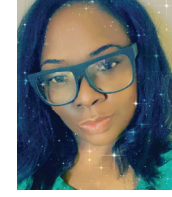
Nancy Dow Moody
 President & CEO

NOTE: True Blue Supporters will be acknowledged in the Annual Report based on the Fiscal Year

new staff



Annissa Byrd is our HR Coordinator. A Bay Area native, she spent the past 3 years building teams for start-ups in the food industry on both the General Management and HR sides. She recently received her PHRca certification, specializing in working with hourly employees. In her free time, Annissa plays soccer, bakes, and spends time training her puppy.



Kesha Deberry is an SLP Assistant Manager. She has extensive experience in this field, especially in day programs and supported living supervision. Kesha has also worked with adults with dementia, children with autism, and managing art and sport programs. In her free time, she loves spending time outside, singing, and cooking.

staff milestones

Due to the ongoing pandemic, **Lifehouse will not be holding our Annual Awards Banquet that honors our community, supporters, staff, parents and the people we support.** Please join us in congratulating the following Lifehouse staff on their milestone years working at Lifehouse.

25 years

Kate O'Connor
 Debra Moore

10 years

June Barbera
 Kimberly Belanga
 Melinda Benedict
 Lorelei Hess
 Elizabeth Ilog
 Sheila Kamai
 Allison Padecky
 Jacqueline Quintanilla
 Wendy Robb

5 years

Miko Baker
 Kaleybra Block
 Darlene Cameron
 Jeffrey Cass
 Rachael Dibb
 Ann Elias
 Grant Finn
 Cynthia Foster
 Alice Hughes
 Zoraima Lopez
 Beatrice Lubin
 Rosalinda Marcott
 Esmeralda Medina
 Maria Navarro

Oscar Padilla
 Jessica Perez
 Lorna Pineda
 Tiffany Pugh
 Alma Ramos
 Shana Reid
 Kyle Rivera
 Robin Roller
 Elizabeth Samulewicz
 Claudia Silva
 Narcisse Sugayan
 Lula Tealer
 Sarah Wood

keeping lifehouse moving forward

Thank you to all of our staff who are keeping Lifehouse moving forward during these unpredictable times. We have over 400 staff keeping the organization running, and most importantly, keeping the people we support with developmental disabilities safe and healthy during Shelter-in-Place and social distancing.



STAFF HIGHLIGHTS

C A R E

staying safe in a covid-19 era

To keep our staff and residents safe during the pandemic, Lifehouse has been acquiring Personal Protective Equipment. While we have had to search for and purchase PPE, such as masks, hand sanitizer, and gloves, we also have support from the community. GGRC has provided some masks for us, and some of our staff volunteered to make masks, donating them to their team and the people that they support. We are truly grateful that everyone is looking after one another!

Our staff works tirelessly and has stepped up to provide care for the people we support in order to help them stay safe and healthy during this time. Here are some of their experiences.



SABRINA WILSON SLP ASSISTANT MANAGER

"I feel truly blessed to be a part of such an amazing organization and a caring team of individuals. At this time, our team is working with the people we support to maintain a healthy and safe environment. They are encouraging the people we support to use their masks and continuously wash their hands throughout the day. Staff are using universal precautions by wearing masks and maintaining a safe distance. Our staff are taking the initiative to engage in fun activities that promote a healthy lifestyle. We greatly appreciate everyone's effort to keep the people we support, the staff, and our community safe."

MIKE SUS ILS MANAGER

"The guys at Comito House have a difficult time with social distancing, and they require constant reminders during the day to do so. In this time when all of our rituals and routines have been disrupted and we are grieving aspects of our old lives that we can't engage in right now, knowing what's important to the people we support is helpful. We have figured out ways in which we might be able to help them have access to those things that help them have a good quality of life or mitigate the losses."



CHRISTINE LEIDER QIDP/ADMINISTRATOR

"Coping with the COVID-19 pandemic has brought many unprecedented challenges each day. I am so proud of the hard work and dedication our Lifehouse ICF team has put in during this incredibly challenging time! They are truly heroes on the front line of fighting off this virus, and they have stepped up to all of the challenges that have come up.

As the pandemic continued to spread, Day Programs shut down, which left the people we support with hours of unstructured time each day. Our staff picked up additional shifts in order to cover these extra hours to make sure everyone we support is able to live a full and healthy life! I know that we have a long way to go before this virus is under control, but I am confident that we will get through it together and as best we can."



AARON DEWALL DIRECT SUPPORT STAFF

"It feels good to be an essential worker. It feels extra intense at first, and, as each day, week and month goes by, the intensity increases as does my focus, which can be exhausting. I really feel the immense responsibility of keeping our community safe.

Lifehouse has been helpful in supplying PPE and being in touch with health concerns and supporting my concerns. In order to reduce risks, I shop for many of the people I serve and help with banking through ATM transactions. I remind everyone I support about practicing precautions a minimum of twice per week."



Photo by Drew Altizer Photography

our community, our success

On April 3rd, Lifehouse launched our Virtual Auction after the cancellation of Great Chefs & Wineries. Thanks to generous donations from our community, we were able to showcase participating and other local wineries in the auction to benefit Lifehouse.

While we missed seeing you in person at Great Chefs and Wineries this year, we felt your presence and generosity online. We raised a total of \$351,776! A Premier Virtual Auction was not what we expected for our annual event and it would not have been possible without you, our amazing supporters.

As the pandemic continues to touch every aspect of our lives, Lifehouse has thus far been very fortunate to keep moving forward. We hope everyone continues to stay safe and healthy. Whenever you can, please help support our local businesses, and the amazing restaurants and wineries that make up our community.

great chefs & wineries 2021

DATE April 17, 2021
VENUE The Clubhouse at Peacock Gap
HONORARY CHAIRMAN Huey Lewis
CULINARY CHAIR Heidi Insalata Krahlung
MUSICAL GUEST Jefferson Starship

We hope to see you next year! We will proceed with caution as necessary and follow all steps to make the event safe and comfortable for everyone. Details to come as it becomes available.

sponsors

<p>diamond</p> <p>Brayton Purcell LLP Attorneys Helping People</p> <p>THIRTY-SEVEN WINES</p> <p>emerald</p> <p>Steve & Chris Wilsey</p> <p>Dr. & Mrs. David Martin</p> <p>decor</p> <p>bright</p> <p>preschool</p> <p>Bank of Marin</p> <p>gold</p> <p>Ed Coyne Friends of Jacquie Gribens Kaiser Permanente Marin Sanitary Service Mark & Susan Schatzberg Morton & Bassett Spices Wells Fargo Advisors Rob & Mary Wilsey</p>	<p>platinum</p> <p>Doug Clough Erin Uesugi</p> <p>mcf Marin Community Foundation</p> <p>sparkle</p> <p>CRESALIA JEWELERS</p> <p>media</p> <p>Marin Independent Journal digitalfirst marinij.com</p> <p>bid paddle</p> <p>MECHANICS BANK</p> <p>mobile bidding</p> <p>Mechanics Bank</p> <p>silver</p> <p>Filice Insurance HUB International Law Offices of Samuel Kornhauser Anooch & Kija Mizany Phil Pollock & Sally Spencer</p>	<p>music</p> <p>Allan & Nancy Herzog</p> <p>print</p> <p>ALL-AMERICAN PRINTING SERVICES</p> <p>magazine</p> <p>MARIN MAGAZINE</p> <p>floral</p> <p>BANK OF SAN FRANCISCO</p>
---	---	--



Photo by Drew Altizer Photography

thank you

to the businesses for supporting Lifehouse's virtual silent auction

- | | | | | |
|-----------------------------|---------------------------|-------------------------------|-----------------------------|--------------------------------|
| 20/20 Optical | Elkhorn Peak Cellars | Kokomo Winery | Republic of Tea | Sol Food |
| AldenAlli | Enriquez Winery | Kosta Browne Winery | Revana Family Vineyards | Spirit Rock Meditation Center |
| Alpha Omega Winery | Foxen Winery | Laser Center of Marin | Rio Crest Winery | St. Francis Winery & Vineyards |
| Amici's East Coast Pizzeria | Frank Family Vineyards | Merriam Vineyards | Robert Foley Vineyards | Tea Fountain |
| Baked Blooms | Freeman Vineyard & Winery | Merry Edwards Winery | Rockpile Vineyards | The Spanish Table |
| Ballemto Vineyards | Winery | MINA Family Kitchen | Rodney Strong Vineyards | Thirty-Seven Wines |
| Benovia Winery | Gaspares Pizzeria | Navarro Vineyards | Roma Antica | Trefethen Family Vineyards |
| BotanicalLife | Gloria Ferrer Wines | Oak Farm Vineyards | Ron Rubin Winery | Viader Vineyards & Winery |
| Cakebread Cellars | Janet & Archie Held | Panchito's Mexican Restaurant | Schweiger Vineyards | ZD Wines |
| Cline Cellars | Jelly Belly | Papapietro Perry Winery | Sephora USA | |
| Corison Winery | Kanzler Vineyards | Peju Province Winery | Silbermann's Ice Cream | |
| Deerfield Ranch Winery | Keenan Winery | Pride Mountain Winery | Silver Oak & Twomey Cellars | |
| DJ Chinese Cuisine | Kendric Vineyards | | | |

www.greatchefsandwineries.org

thirty-seven wines

Thirty-Seven Wines and their proprietors Al and Lisa Brayton are tremendous Lifehouse supporters. Al and Lisa launched Thirty-Seven Wines in 2007 and for the past ten years have been a participating winery at Lifehouse's Great Chefs & Wineries. They are also table sponsors at the event. On July 19, Thirty-Seven Wines hosted a virtual wine tasting in support of Lifehouse. We are truly grateful for their support!

Thirty-Seven Wines is currently being served at the Region, a new wine bar at The Barlow in Sebastopol. They are among 25 small wine producers who have been selected to each have taps at their self-serve wine station. Each winery will also host the Region's tasting room throughout the year. **Thirty-Seven Wines will be hosting their first week August 31-September 6th.** Go and check out Thirty Seven Wines at the Region!

ongoing supporters

thank you to our loyal supporters

- Balboa Café San Francisco | Boca Tavern & Boca Pizzeria | Buckeye Roadhouse | Copita Tequileria y Comida | Farallon Restaurant | the girl & the fig | Il Davide | Insalata's | Le Comptoir | Left Bank Brasserie | Marinitas | Michael Mina | PABU Izakaya San Francisco | "The Clubhouse" at Peacock Gap | Pedrozo Dairy & Cheese Co | Peju Province Winery | Perry's Larkspur | Piatti Mill Valley | Piazza D'Angelo | Picco | Playa | Poggio Trattoria | State Room Kitchen | Sushi Ran

- AldenAlli | Benovia Winery | Brooks Note Winery | Cakebread Cellars | Dutton-Goldfield Winery | Frank Family Vineyards | HALL Wines, WALT Wines, BACA Wines | Harford Family Winery | Kanzler Vineyards | Keenan Winery | Kendric Vineyards | Linked Vineyards | Merry Edwards Winery | Navarro Vineyards & Winery | Papapietro Perry Winery | Peju Province Winery | Pride Mountain Vineyards | Revana Family Vineyards | Ron Rubin Winery | Schweiger Vineyards | Silver Oak & Twomey Cellars | Spire Collection | Thirty-Seven Wines | William Harrison Vineyards & Winery | Wilson Winery | ZD Wines

- Ital Foods | Fiorello's Gelato | Miyoko's Creamery | Rustic Bakery | The Clubhouse at Peacock Gap

- Red Whale Coffee | State Room Brewery | Hansons of Sonoma Distillery | Sonoma Syrup Company



Photo by Drew Altizer Photography

mina family kitchen

MINA FAMILY KITCHEN generously donated an all-day Mother's Day feast for six for our virtual silent auction back in April! The meal was prepared by Chef Michael Mina's top chefs from the MINA Family Kitchen restaurant in San Francisco. We are

"The goal of our MINA FAMILY KITCHEN, is to feed our immediate restaurant family, the people in our industry, and our larger community. This is the time to nourish ourselves and to take care of one another."

Michael Mina

so grateful for their support, especially during such challenging times for restaurants.

During this time, Chef Mina and his team have rallied to feed furloughed employees as well as local healthcare workers. They have

also worked tirelessly to keep their kitchen open, and to offer their delicious food for pick-up and delivery throughout the entire Bay Area (including delivery to Marin)! You can view their entire menu and order food via their website: MINAFamilyKitchen.com. If you phone in your order and pick it up yourself at their restaurant, located at 252 California Street in the Financial District of SF, you will receive 10% off.

Additionally, their popular PABU Izakaya is now open for outdoor dining on their new expanded patio! Consider taking a night off from cooking and support our valuable partners.

harvest auction **oct 9-18, 2020**

Save the Date for another virtual silent auction featuring some amazing items!

Sneak Peek: Virtual Hangout with the Stars of HAMILTON One hour virtual hangout with 3 stars from the hit Broadway show. Perfect for a large group of friends and family. **Please stay tuned for more.**

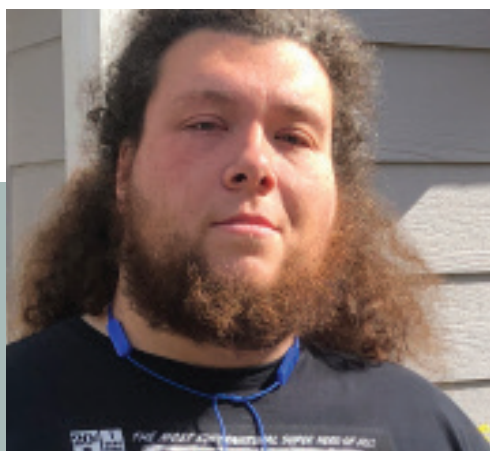


source: www.michaelmina.net

RESTAURANT HIGHLIGHT

A FULL LIFE

defined by the individual, supported by lifehouse



COREY SLATTON

Meet Lifehouse resident Corey. As a young man with Asperger's, he struggled to find his place in the world and feel comfortable in his own skin. In a candid interview, Corey says "good-bye" to letting stigmas narrate his life. With the support of Lifehouse staff, Corey sets goals for himself and embraces the camaraderie and positivity that our community offers. He wants others with developmental disabilities to know it's okay to step outside of their comfort zone and not let their disability define them.

ARLEEN MCKINNON

Arleen has been a Lifehouse resident for ten years and will celebrate her eighty-first birthday at the end of this month! Arleen landed in California by way of New York and fell in love. She likes to keep things sharp, and that means never missing a day of Jeopardy or Wheel of Fortune. Arleen also enjoys crafts and painting. This is particularly important to her as a way to spend time with her sister, Kathy Martin, who is a local mixed media artist. She currently assists her sister with paper shredding to create a self portrait. Arleen loves living in a community living setting with her three roommates who are also Lifehouse Residents. For more fun updates on the Lifehouse community, please check out our website or social media platforms!



meet more of our community:
www.lifehouseagency.org/blog

campaign for a permanent home

essential to our community

The goals for Lifehouse remain focused on providing a high quality of life, care, and safety for the individuals we support. As meeting the essential needs of our community continues to grow, so does the need to properly staff, train, and enhance our programs. 18 Professional Center Parkway will free up the critical space and funding required to meet these needs. With your support, the Home for Life Capital Campaign will secure a sustainable future for Lifehouse and validate this typically unseen population. A permanent home for Lifehouse means that we continue to be here for you and do our best to serve our community, now and always.

donate or learn more:

www.lifehouseagency.org/learnmore



Photo by Michael Loeb

yearly savings upon meeting our goal:

\$240,000

funds raised to date:

\$2.4 M

goal:

\$5.8 M

HOME FOR LIFE

COMMUNITY PARTNERSHIPS



everyone
FOR EVERY BODY

For 25 years, EO Products has been a trusted source to help keep families safe and healthy. In response to COVID-19, they increased their production capacity four times over for soaps and sanitizers, focusing exclusively on products that keep hands clean and healthy. EO made an additional commitment to community organizations at the state and national level to get products to the front lines. This included a donation of hand sanitizer to Lifehouse, which were distributed to our Direct Support Professionals. Thank you to EO Products and their commitment to serve our community!



 **Golden Gate Regional Center**

The Golden Gate Regional Center (GGRC) has been a community partner with Lifehouse since 1966. In response to COVID-19, and in the interest of keeping our community safe, Lifehouse and GGRC assembled a taskforce to acquire Personal Protective Equipment (PPE) and distribute to essential workers. Lifehouse Co-Directors of Operations, Michelle Condit and Kate O'Connor, have shared the responsibility of heading up this taskforce with Integrated Community Services Executive Director, Abby Yim. Their collective and tireless efforts to make sure that our essential workers are healthy and safe are truly inspiring. Thank you to the Golden Gate Regional Center!



VIDA

VIDA brings together creatives and manufacturers from around the world to create unique, art-inspired accessories and home goods. In response to COVID-19, they redirected efforts to produce products that matter the most right now - Personal Protective Masks and Protective Accessories. They know millions of people and organizations need masks for themselves, their essential employees, and communities. VIDA was there to help Lifehouse and made a donation of masks for our staff and community. Thank you VIDA for your generous support!

become a social media ambassador for lifehouse

Becoming a Virtual Ambassador is at no cost to you but will have a meaningful impact for Lifehouse

By encouraging your community to join the Lifehouse Family, you are broadening the scope of people who can listen, learn, donate, and advocate for individuals with developmental disabilities.

Follow us on Instagram @lifehouseagency

Tag us in your stories or feed and let people know why you choose to support Lifehouse. Reposting Lifehouse content is a great way to promote us, as is tagging friends and engaging them with comments!

Like us on Facebook @lifehouseagency

After you have 'liked' us, you can invite your community to 'like' us too: Go to the @Lifehouseagency FB page. Scroll across the top, go to 'COMMUNITY' Click 'INVITE FRIENDS' Click 'ALL' - Wait 10-15 seconds for the invitations to send.

Check out our Blog

Our blog is another way for us to communicate happenings around Lifehouse with our community.

www.lifehouseagency.org/blog



Photo by Michael Loeb



LET'S GET SOCIAL



Lifehouse
899 Northgate Drive
Suite 500
San Rafael, CA 94903

NON PROFIT
ORGANIZATION
US POSTAGE
PAID
PERMIT NO. 105

support Your support during these times is vital. Our sustainability as an organization depends on the support of our generous community.

Home for Life Capital Campaign
lifehouseagency.org/homeforlife

Help Us Build a Sustainable Future
lifehouseagency.org/donate

we are open

Great Expectations Inclusive Preschool During Social Distancing

Great Expectations is open! Due to COVID-19, we have put into place some modifications. We have a stable cohort of no more than 10 students with 3-5 staff. Children are checked in at a designated area and no visitors are allowed inside the building. A daily health screening with temperature check is done three times a day. All staff self-administer a symptom screening and wear facial coverings at all times. For a complete list of our modifications, please visit greatexpectationsmarin.org/covid-info

Our team of 3 teachers and 2 paraeducators participated in the CA CSEFEL Teaching Pyramid Framework training this past year. We are excited to continue supporting children at the school and implementing new methods for teaching. Please contact us for a tour of the school!

850 Del Ganado Road, San Rafael, CA, 94903
415.499.5892 Inichelini@lifehouseagency.org
[facebook.com/greatexpectationsmarin](https://www.facebook.com/greatexpectationsmarin)
greatexpectationsmarin.org



899 Northgate Drive #500
San Rafael, CA 94903
P: 415.526.5300 F: 415.472.5739
mail@lifehouseagency.org

6050 Commerce Blvd. #105
Rohnert Park, CA 94928
P: 707.586.1961 F: 707.586.0919
mail@lifehouseagency.org

President & CEO
Nancy Dow
Moody

Director of Finance
Viola Morris

Director of
Development
Ann Elias

Director of Programs &
Operations
Kale O'Connor

Director of Programs &
Operations
Michelle Condit

Director of Human
Resources & IT
Johanna Schleret