

6 1954 CELEBRATE 5

LIFEHOUSE 2019

lifehouse

servicing people with developmental disabilities since 1954

SP 2019 | NO.39



1954

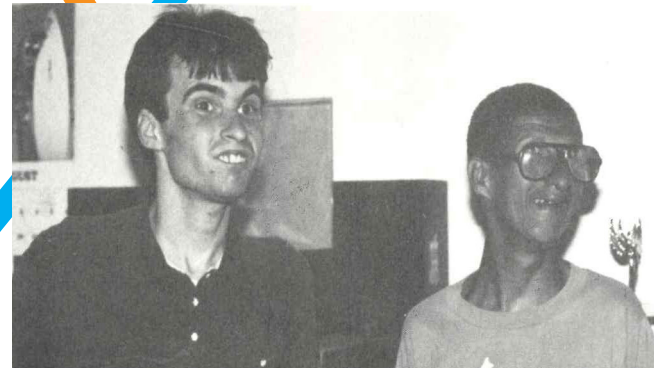
One of the fundamental values on which Lifehouse was founded was to create a sense of belonging in our community. Established in 1954 as Marin Aid to Retarded

Children (MARC), it began as a nursery school for children with developmental disabilities (see left picture) and has grown into one of the most well-respected nonprofit agencies in the Bay Area. The founders' vision came directly from their hopes and dreams that their sons and daughters would be accepted and welcome members of our community. To this day, Lifehouse fulfills this hope by supporting each individual to live their most independent life.

1987

In 1987, Montecello House opened its doors to provide support for six men to live an independent life in our community. Pictured on the right, David Burns and Craig Collins hang out at Montecello House.

Additionally, two ICF (Intermediate Care Facility) group homes opened for 18 people with profound developmental disabilities. These group homes allowed for more specialized care for fragile individuals with support from an RN and physician.



2019

Lifehouse started as a preschool in 1954, and in 2018, Lifehouse opened Great Expectations, an inclusive preschool for children of all abilities located in the Marindale campus in Terra Linda. We have a talented Director, two General Education

teachers, a Special Education teacher, and three paraeducators. The student to teacher ratio is low, providing each student an enriching learning experience. We are delighted that Lifehouse, in collaboration with Marin County Office of Education and Dominican University, is able to provide the first inclusive educational environment for children in our community. We are hoping that this becomes the standard in Marin County.



join us in celebrating 65 years of service
lifehouseagency.org

the president's corner

Dear Friends,

Sixty-five years ago, we know that the world was a very different place for people with developmental disabilities. The community was not as accepting. Buildings, streets, and public transportation were challenging to navigate. Options for support and the necessary services for families were rare. It was in that world that caring, concerned parents and community leaders banded together to form a fledgling nonprofit that would grow into a change-making, innovative organization that positively affects and improves the landscape for children, adults, and families of all abilities throughout the Bay Area.

Through consciousness raising, the passing of federal and state laws, and decades of dedicated advocacy by parents, siblings, friends, caregivers, and agencies, there is much more understanding about developmental disabilities now than 65 years ago. With this understanding comes a clearer path to opportunities for people with developmental disabilities in our community. This is where Lifehouse can help, to support individuals on their journey towards greater independence and acceptance in the community.

It was an honor to join Lifehouse back in 1992. Lifehouse has an impeccable reputation and is continuously growing and adapting to address community needs. Each year, new programs and services are developed that are collaborative, creative, and were just unheard of back in 1954. As the CEO since 2008, I know the commitment to quality and innovative service delivery demonstrated by Lifehouse does not waver. If we all stop for a moment to take a collective look back at just how far Lifehouse has come over the past 65 years, it is breathtaking. However, standing still is simply not possible because new community needs continue to emerge, and Lifehouse will grow and adapt to address them.

As I look forward to the future of Lifehouse, I know that success is inevitable because of the combined strength of our staff, volunteers, family, friends, community members and the Board of Directors who guide us. Join me as we celebrate this remarkable milestone together, the 65th Anniversary of Lifehouse!

Warm wishes,

Nancy Dow Moody
Lifehouse
President & CEO



progress
at
lifehouse

advisory
council

Jacque Gribens, Chair | Dr. Joseph Spinelli,
Vice Chair | Lia Economopoulos, Treasurer |
James Ricks, Secretary | Nancy Dow Moody,
Lifehouse President & CEO | Alan Brayton |
Doug Clough | Daniel Engel | Stephen
Meeker | LaDawn Reichling | James Ricks |
Paul Smith | Justin Tedford | Nancy Toney

Eric Aanes | Susan Brixon-Hastings |
Mary Jane Burke | Patty Garbarino |
Congressman Jared Huffman |
Patricia Kendall |
Assemblymember Marc Levine |
Marc Loupé | James Shorter

LIFEHOUSE PHILOSOPHY TRAININGS

One of our goals in the **Five Year Strategic Plan** developed and approved by the Lifehouse Board of Directors last year is to work on increasing the Lifehouse brand in the community as a thought leader. We have increased the amount of trainings provided to staff who work directly with the people we support. "Lifehouse Philosophy and Best Practices" is a mandatory training for all staff and provides the basics of Lifehouse's service model and expectations. Lifehouse Directors and Managers receive trainings to become trainers and experts. These trainings are then developed and offered to our direct support staff. Trainings are now offered several times monthly.



GREAT EXPECTATIONS

By Lynn Nichelini, Director of Great Expectations Preschool

It's hard to believe we are already halfway through our first school year at Great Expectations! The children in our play-based program are full of wonder and joy. It's such a privilege to work with each of them and share in their everyday magical experiences. We are proud to provide our students a strong early childhood foundation for learning and growing.

Our staffing is now complete and includes myself, Lynn Nichelini, Director and General Education Teacher, Ashley Wooldridge, MCOE Special Education Teacher, Anna Sepan and Esmeralda Lopez, MCOE paraeducators, Marisa Aguilar, PM Teacher, and Milani Bernardini, PM paraeducator. Our small class size and low teacher to student ratio allows us to build a positive, trusting relationship with each child in the program. That connection and sense of belonging is so important in being able to support their individual needs and interests.

As an inclusive school, we respect and accept differences and offer a safe and welcoming environment for children of all types of abilities, needs, and learning styles. That said, our challenge has been sharing the benefits of an inclusive program with prospective families and encouraging enrollment of typically developing children. **Here's where we can use your help.** Please share information about our program with your family, friends, neighbors, colleagues, etc. Visit our website at www.greatexpectationsmarin.org. Watch the video introducing our program, including testimonials from current parents. Check out and "like" our Facebook page "Great Expectations Marin Inclusive Preschool" and share with friends. Help us distribute our brochures to prospective families. We give tours by appointment and are currently enrolling students for immediate, summer and fall placement. With your support, we look forward to fulfilling our mission of providing equity to our youngest members of society, and inspiring other schools to do the same.

greatexpectationsmarin.org



board of
directors

great chefs & wineries

4.13.19

honorary chairman huey lewis
master of ceremonies betty yu
culinary host heidi insalata krahling
musical guest mustache harbor
auctioneer damon casatico

peacock gap

Farallon Restaurant
by Drew Altizer Photography

featuring

restaurants

Americano San Francisco | Balboa Café San Francisco | Boca Tavern & Boca Pizzeria | Buckeye Roadhouse | Copita Tequileria y Comida | Farallon Restaurant | Il Davide | Il Fornaio | Insalata's | Le Comptoir | Left Bank Brasserie | Marinitas | Osteria Stellina | "The Clubhouse" at Peacock Gap | Perry's Larkspur | Piatti Mill Valley | Piazza D'Angelo | Picco | Poggio | Servino Ristorante | State Room Kitchen & Brewery | Sushi Ran | Wildfox

wineries

Benovia Winery | Brooks Note Winery | Cakebread Cellars | Dutton-Goldfield Winery | Frank Family Vineyards | Freeman Vineyard & Winery | Hall Wines | Hartford Family Winery | Keenan Winery | Kistler Vineyards | Kosta Browne Winery | Linked Vineyards | Merry Edwards Winery | Navarro Vineyards & Winery | Papapietro Perry Winery | Peay Vineyards | Pride Mountain Vineyards | Revana Family Vineyards | Ron Rubin Winery | Schweiger Vineyards | Selah Wines | Silver Oak & Twomey Cellars | Thirty-Seven Winery | Wilson Winery | ZD Wines

libations

Red Whale Coffee
 Republic of Tea
 Stillwater Distillers
 Sonoma Brothers Distilling
 Sonoma Syrup Company

dining room

Rustic Bakery
 Red Whale Coffee
 Fiorello Artisan Gelato

beer garden

Fort Point Brewery
 Marin Brewing Company
 Moylan's Brewing Company
 State Room Kitchen + Brewery



photo: hbofm.org

Our auction is facilitated this year by GiveSmart, a mobile bidding platform.

Have all the auction details at your fingertips! Peruse hundreds of items, like the Fresh Starts Celebrity Chef Event in Marin. Two guests will enjoy a chef presentation of a 3-course meal, prepared by students of the Fresh Starts Culinary Academy. Fresh Starts is a social enterprise of Homeward Bound of Marin. This year's celebrity guests for this auction item include Heidi Insalata Krahling of Insalata's and Joanne Weir of Copita.

silent auction early access

Preview Live Auction items beginning Friday, March 22, 2019. Silent Auction will open for view and bid on Friday, March 29, 2019.

gcw2019.givesmart.com

sponsors

anniversary



diamond

Brayton Purcell LLP
Attorneys Helping People

platinum



music

Allan & Nancy Herzog

emerald

Steve & Chris Wilsey

sparkle

CRESALIA JEWELERS

print



decor

bright EVENT RENTALS

venue

PEACOCK GAP THE CLUBHOUSE

gift



preschool



media

Marin Independent Journal
digitalfirst | marinij.com

magazine

MARIN MAGAZINE

valet



bid paddle



gold tables

Ed Coyne | Helen Brame | Deloitte | Kaiser Permanente | Dr. & Mrs. David W. Martin | Marin Sanitary Service | Mark & Susan Schatzberg | Mt. Tamalpais Mortuary & Cemetery | Wells Fargo Advisors | Robert & Mary Wilsey

silver tables

Berkshire Hathaway | Fred Cohen & Carolyn Klebanoff | Costello & Sons Insurance | Filice Insurance | In Memory of Walter Hall, DDS, MSD | Law Offices of Samuel Kornhauser | Mechanics Bank | Anoosh & Kija Mizany | Phil Pollock & Sally Spencer

additional support

Bank of San Francisco, Floral Sponsor | California Math Festival, Mobile Bidding Sponsor |

tickets

Don't miss out!

Table sponsorships seat 10 guests to enjoy all participating restaurants and wineries at the event. Includes brand recognition in event program and advertisements.

Individual tickets are \$350, which will give you access to all participating restaurants and wineries as well as our silent and live auctions.

greatchefsandwineries.org/tickets

sparkle raffle

CRESALIA JEWELERS

- 18 carat white gold diamond necklace
- 21 round brilliant faceted diamonds individually set on either side of the center section weigh 0.32 carats
- Centerpiece set with 6 diamonds of different shapes and sizes weigh 1.29 carats
- Overall clarity is vs2
- Made especially for Lifehouse

\$100 DONATION FOR RAFFLE ENTRY
 RAFFLE TICKET IN INVITATION
 OR CALL 415.526.5300 FOR ENTRY & DONATION

the reality of autism: a VR experience



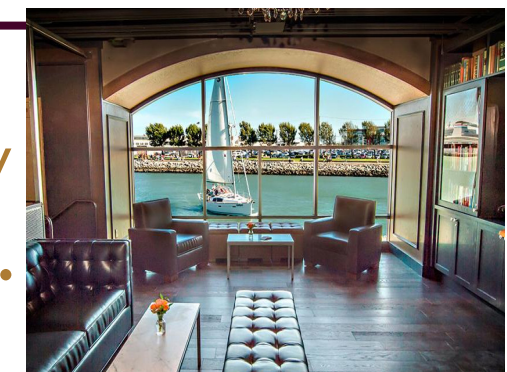
This Virtual Reality experience is hosted by our Adventures in Technology Program, which adapts mainstream technology to make it accessible and functional for individuals with developmental disabilities.

Find out what it feels like to walk in someone's shoes who has Autism with a 90 second technological and immersive experience.

The Giants-Dodgers rivalry began in New York in 1898 and is regarded as one of the most venerable competitions in American baseball.
Cheer on the Giants vs. Dodgers on June 7, 2019 in Premium Lower Box 115, directly behind home plate in Row 23.

You will also have access to the Gotham Club and the Gotham Clubhouse. Includes Parking Lot A Pass. These baseball seats are not made available for sale to the public except through a generous donation to Lifehouse!

live auction preview giants vs. dodgers



Gotham Clubhouse
www.mlb.com/giants/gc1883/gotham-club-features/venues

living my best life

Everyone has a beautiful story to share. *Living My Best Life* is a collection of inspirational videos featuring the individuals served by Lifehouse telling their own stories and truths as they learn and grow within the community. It is our hope that viewers will be able to “meet” our residents through their likes, dislikes, struggles, and triumphs presented in these profiles.

Filmed and Produced by Chikara Motomura



[Live on the website now]

PETER ELIAS

Peter has been a Lifehouse resident for 18 years and lives in Comito House with his best friend Greg and four other roommates. Peter has a great sense of humor, loves to work with his hands, and is an avid sports enthusiast. Are you a baseball or basketball fan? Then you and Peter will get along just fine, but you'd better be rooting for the Giants or the Warriors!



[Coming soon]

CHLOE POLLOCK

Meet Chloe- a lovely, talented, confident young woman and a Lifehouse resident for the past six years. Chloe has had a strong creative drive since she was a young girl and a beautiful collection of her drawings fill the halls of Hamilton Place where she lives. Chloe's other interests include fashion, theater, health, and dance. You can see her rocking her dance moves in the Lifehouse performance at the annual Great Chefs & Wineries on April 13, 2019!



[Live on the website now]

DANTE MAZZOLINI

Meet Dante- He is a kind and determined individual living on his own for five and a half years with the help of Lifehouse. At Santa Rosa Junior College, Dante worked hard and received a Technical Degree through C2C (College to Career). He now works full time as a courtesy clerk at Safeway, but hopes someday to fulfill his lifelong dream of working with animals. Dante believes that everyone should hang in there and follow their dreams.

[Coming soon]

BRETON KAISER-SHIN

Breton is a true example of what creativity, a positive attitude, and determination can bring. Fresh off releasing his first book, *The Dragon of Emerhill*, Breton is already dreaming up a sequel and maybe even a trilogy. His love for the arts paints him a true renaissance man with an enthusiasm for the classics in poetry, love of theater, and an incredible skill for drawing and painting.

You can purchase his book online at Amazon and Barnes & Noble or brick and mortar at Books-A-Million, IndieBound, and Book Passage.



VIEW

You can find these profiles at www.lifehouseagency.org/media

awards banquet

Our Annual Awards Banquet is an opportunity for Lifehouse to celebrate, recognize, and honor the big-hearts of our community, staff, and most importantly the individuals we support. Our community is the backbone of Lifehouse and has helped it grow to become the flourishing agency we are today. Thank you for sharing in the joy, compassion, and empowerment that Lifehouse works so hard to achieve.

This important community event was made possible by our Inspiration Sponsor, **Doug and Erin Clough**, our Community Sponsors, **Marin Sanitary Service, HUB International, John Morre and Jane Ferrante**, as well as our Unity Sponsor, **Lindquist Von Husen and Joyce LLP**. A special thanks to **Mary Jane Burke**, our Marin County Superintendent of Schools for serving as our Master of Ceremonies once again!



Greg DeSouza, Jason Fesler, Doreen Ramirez



Tina Newkirk, Lily Ehmann, Robert Mayfield



Ann Elias, Chef Joanne Weir, Nancy Dow Moody, Chef Daniel Tellez



Board members Dr. Joseph Spinelli and Daniel Engel



Nancy Dow Moody, Johanna Schleret, Viola Morris

holiday cheer

LIFEHOUSE HOLIDAY

The Lifehouse Holiday Party is a highly anticipated event because it is an opportunity for all of us to get together and celebrate in the midst of the holiday hustle and bustle. This event boasted over 300 guests in attendance! Many thanks go to DJ Terri deLangis for the music, Omar Cruz for providing the delicious paella, and Red Whale for the coffee. Thank you to the Girl Scouts of Northern California for a cheerful carol performance and delicious homemade cookies for all of our guests. Gerald Leuschen graced us with his jolly presence as Santa for the evening. Last but not least, a huge thanks goes out to all of our supporters and volunteers for helping make the holidays the most wonderful time of the year.



Rachelle Germain, Flannery Weil, Santa



Mylan Perovich, Nonie Hall



Sophia and Doug Clough

YACHT CLUB PARTY

A special thank you to Commodore Mia Bernt and the members of the **San Rafael Yacht Club** for hosting another joyful yacht party for Lifehouse on December 8, 2018. This year, the weather was beautiful and the tides were optimal for a gentle cruise on the San Rafael harbor. Santa and his elf even stopped by with gifts for everyone.

Thank you to San Rafael Yacht Club for their on-going generosity towards Lifehouse!



Martha Johnson, Tanya Noske, San Rafael Fire Dept.



Joceli of Marin Ventures and Kyle Quick

honorees

COMMUNITY AWARDS

EMPLOYER OF THE YEAR

Neal Hutchinson | Safeway

OPEN ARMS AWARD

The Wilsey Family

CHARLES L MARTIN AWARD

The McKeever Family

PERSONAL ACHIEVEMENT AWARD

Lily Ehmann

EXTRAORDINARY COMMUNITY SERVICE

Kellie Lennon Jackson | Cedars Victory Center

WINERY OF THE YEAR

Kathryn Hall | HALL Wines

VOLUNTEER OF THE YEAR

Eric Aanes

SPIRIT OF LIFEHOUSE

Daniel Engel

RESTAURANT OF THE YEAR

Chefs Joanne Weir & Daniel Tellez | Copita Tequileria y Comida

OUTSTANDING CORPORATE INVOLVEMENT

Mimi Towle | Marin Magazine

OUTSTANDING STAFF RECOGNITION

JOHANNA SCHLERET

Director of Human Resources

LISA ANN CARBONE

Senior Manager

ANJA HANSEN

Supported Living Program Manager

COY FERINI

Administration & Development Assistant

KAYLA HOTCHKISS

Intermediate Care Facility House Manager

Richard Wheeler Photography



Nikki Wood & Mimi Towle

welcome to the team

to support our growing numbers...



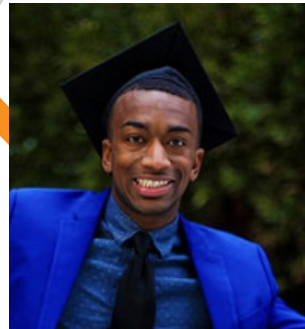
CARLENE

Carlene Ancheta is our new Assistant Manager. Born in Vallejo, Carlene is passionate about helping people. She joined the Best Buddies Club at her high school where she developed friendships with individuals with developmental disabilities. While attending UC-Davis, Carlene worked as a caregiver for the elderly. After graduation, she worked in ABA Therapy/ Early Intervention with children and volunteered at the San Jose Veterans Clinic as an Adult Day Health Care Aide. Carlene is very excited to have the opportunity to help the people we support. In her free time, Carlene enjoys spending time with her son, hiking, jogging, playing tennis, and traveling.



TIFFANY

Tiffany Scott is our new Assistant Manager. A native of the Bay Area, Tiffany has been in the service field for ten years. Tiffany is extremely excited to start her new position at Lifehouse and hopes to make a difference in the lives of the people that we support. She currently resides in Vallejo and loves to spend time with her two beautiful daughters. When she has time, she also enjoys fishing and riding ATVs.



DEION

Deion Mason is our new Human Resources Assistant. A Bay Area native, Deion currently lives in Vallejo. He recently graduated from Alabama State University with a B.A. in Business, where he also played collegiate football. Before working at Lifehouse, Deion was the Senior Human Resource Team Leader for Target in Novato and Sausalito. Deion is very excited about transitioning from the corporate sector to the non-profit sector and looks forward to this change. In his spare time, Deion likes to watch sports, workout, and read about turtles.



YANELI

Yaneli Mata is our new Assistant Manager. A native of Sonoma County, Yaneli has seven years of experience working with people with developmental disabilities, with four years at Sonoma Valley Hospital and three years as a job coach for people with disabilities. Yaneli attended Napa Valley College for her Associates Degree in Behavioral Science and then transferred to Sonoma State University and obtained a B.A. in Sociology and Political Science. She is passionate about social justice issues and enjoys working with vulnerable populations including women, ethnic minorities, the LGBTQIA community, and those with disabilities. In her free time, Yaneli enjoys reading, running, and serving as an activist in her community.



SABRINA

Sabrina Wilson is our new Assistant Manager. She has 14 years of experience working with youth, elderly, and people with disabilities. She is very excited to be part of such a strong, caring and determined team of individuals at Lifehouse who share the same goals in supporting individuals with developmental disabilities.



JENNI

Jennifer Dent is our new Technology Specialist. Born at Travis Air Force Base in Fairfield, Jenni moved to Marin from Oakland seven years ago to be closer to her grandfather. Upon moving to Marin, she wanted to be a part of the community, so she started to volunteer at Rotacare's Free Clinic while she was waiting for her CPT license. In 2016, Jenni became a lab technician at Quest Diagnostics. Now, Jenni is honored to be a part of Lifehouse's technology department. In her free time, Jenni enjoys catching up with friends, hiking near the ocean, spending time with family, and going on local adventures.

in memoriam

1947-2018



WILLA DUGGAN

Willa Duggan passed away on November 4, 2018. She was a caring, fun, bright, and amazing woman who received support from Lifehouse for many years. She was an incredible artist and enjoyed sharing her work with others. She had a shining personality that brought joy to everyone around her. She especially loved going out into the community and visiting friends, neighbors, family and anyone else she might meet. Willa also took great pride in being part of Lifehouse and enjoyed raising funds every year to help support the organization.

1950- 2018



JEFF ROUNDS

Jeff Rounds passed away on October 24, 2018 in the early evening after a brief illness. He had recently celebrated his 68th birthday. A long-time participant with Lifehouse, he enjoyed music, art, animals, gardening, and spending time with his friends. A quiet, caring man, he is survived by his girlfriend, his daughter in Texas, and a sister in Arizona.

A Celebration of Life in November was held at Post Acute in Sonoma to commemorate his life.

community partners

Community partners are integral to our success as an organization. As a Lifehouse partner, you will reach a large audience of community members while making a difference in the lives of the people we support.

To become a partner with us, please visit lifehouseagency.org/ways-to-help



St. Patrick Church, Larkspur

Thank you to the generous congregation of St. Patrick Church in Larkspur for once again fulfilling the wish lists of the people we support as part of their holiday giving tree program. Everyone loved their gifts! Their kindness has made such a difference in the lives of many of our residents, some of who do not have family members. Thank you St. Patrick Church!

stpatricksparish.com



Helping to end hunger in Marin

photo: www.cafarmersmkt.com

ExtraFood is a nonprofit organization working to prevent food waste and end hunger in Marin County. Volunteers at ExtraFood pick up excess food from Marin vendors like grocery stores and farmers markets and drop them off at nonprofit partners who serve vulnerable populations.

Lifehouse has been lucky enough to work with ExtraFood for several years now, and the people we support look forward to receiving delicious and nutritious food every week. Thank you ExtraFood!

extrafood.org

let's get social

YOU POSSESS VISION & PERSPECTIVE THAT MAKES THIS WORLD A BETTER PLACE.



"We rise by lifting others."
—Robert G Ingersoll

JOIN IN

Lifehouse is increasing our social media presence! Please help us spread the word about the work that Lifehouse does in the community for people with developmental disabilities. We love sharing our experiences with you and encourage you to share with us as well!

Please contact Jennifer Waight at jwaight@lifehouseagency.org if you have any questions or story ideas!

HASHTAGS + CAMPAIGNS

You can tag us in your social posts using [@lifehouseagency](#).

Don't forget to use these hashtags!


[#lifehouseagency](#)
[#livingmybestlife](#)
[#gcw2019](#)
[#lifehouselegacy](#)
[#lifehouse65](#)
[#greatchefsandwineries](#)

FOLLOW

You and your community can get involved with Lifehouse by following & liking us on Facebook, Instagram, and Twitter.

 facebook.com/lifehouseagency

 instagram.com/lifehouseagency

 twitter.com/lifehouseagency

in the community

SRHS MEDIA ACADEMY



Every year, the students of San Rafael High School's Media Academy participate in a project called CAP (Community Action Project). CAP is an opportunity for student teams to work with local non-profit organizations and collaborate with these community members to produce high quality promotional videos.

Lifehouse worked with SRHS students Caitlin Chow, Jessa Josephson, Nick Besson, Kayla Wright, Jessica Hernandez, and Drew Cavaney to produce a video centered around the celebration of Lifehouse's 65th Anniversary, focusing on the legacy of the organization and the ways Lifehouse has impacted the individuals we serve. The result- an impactful video that illustrates how Lifehouse is an intricate community full of joy, compassion, acceptance and empowerment. Through this project, these Media Academy students demonstrated that they are committed to becoming creative and contributing members of the world with an exceptional level of professionalism.

View the film on our website:
www.lifehouseagency.org/blog

MARIN AUTISM COLLABORATIVE



The Marin Autism Collaborative is a collaboration of nonprofit and government agencies in Marin working to improve services and access to information for individuals with autism and their families.

On April 27, 2019, the Marin Autism Collaborative will hold a free event at the Buck Institute in Novato featuring Dr. Lawrence Fung, a professor of Psychiatry and Behavioral Sciences at Stanford University, focusing on autism spectrum disorders and neurogenetic disorders.

Please stay tuned for more information.

true blue supporters

July 1, 2018 - December 31, 2018

DIAMOND DONORS (\$5000+)

Mr. and Mrs. Paul Cleveland
Mr. & Mrs. Douglas Clough
Mr. and Mrs. Yves De Balmann
Deloitte.
Down Syndrome Association North Bay
Mr. & Mrs. Peter Hamel
Mr. and Mrs. Allan Herzog
Ms. Carolyn Klebanoff

Mr. and Mrs. John Leones
Ms. Ursula Miller
Mr. and Mrs. Matt Moran
The San Francisco Foundation
Sweetwater Spectrum
Mr. and Mrs.
Christopher Wilsey
Mr. and Mrs. Robert Wilsey

THE 1954 CLUB (\$1,954 to \$4,999)

Mr. Eric Bjornson
California Math Festival Program Costello & Sons Insurance
Mr. and Mrs. Terry De Voto
Dr. and Mrs. David Essick
Mr. and Mrs. Michael Funk
Mr. and Mrs. David Gilbert
Mr. and Mrs. Bruce Gribens
Ms. Lynette James

Mr. and Mrs. Thomas Lloyd
Ms. Nancy S. Mandl
Mr. and Mrs. Anooosh Mizany
Dr. and Mrs. James Morrison
Ms. LaDawn Reichling
Ms. Marty Roach
Dr. and Mrs. Joseph Spinelli
Mr. and Mrs. Homi Vazifdar

SAPPHIRE DONORS (\$500 to \$1953)

Anonymous
Arntz Family Foundation
AXA Foundation
Bank of San Francisco
Mr. Jay Beasley Jr.
Ms. Angie Bersin
Mr. Elliot Bien
The Honorable Barbara Boxer
Cahill
Mr. Steven Cherwon
Mr. and Mrs. Charles Collins
Community Health Charities
Ms. Alida Comtois

Ms. Gail Coney
Mr. and Mrs. Dennis Covington
Mr. and Mrs. Michael Danzig
Ms. Joan Dinkelspiel
Ms. Nancy Dow Moody
Mr. and Mrs. Dan Engel
Mr. & Mrs. Bill Evans
Fernbacher-Herzog-Ziegler LLC
Ms. Kimberly Fisher
Mr. and Mrs. Dennis Gilardi
Ginnie and Peter E. Haas, Jr. Fund
Mr. and Mrs. Peter Grossman
Mr. and Mrs. Archie Held

Mrs. Willi Hilliard
The Hilltop Foundation
Hub International Insurance
Mr. John Morre
Ms. Anne Kaiser
Mrs. Virginia Kalb
Ms. Trish Kiely
Lindquist, von Husen & Joyce LLP
Marc Elias Cleaning Service
Marin Resource Recovery Center
Mr. Blair Martin
Mr. and Mrs. Charles Martin
Mr. and Mrs. Stephen McKeever

Ms. Elizabeth Morrison
Mr. and Mrs. Frank Noonan
Mr. Ken Novak
Mr. and Mrs. Roger Odenberg
O'Rourke Electric, Inc
Mr. James Placak
Mr. and Mrs. Chuck Quick
The RCP Tiburon Mile RCP Events
Redhawk Glass, Inc.
Robb and Ross Law Offices
Mr. and Mrs. Michael Sabarese
Mr. Sidney Sall
Mr. and Mrs. Craig Scheidt

Mr. and Mrs. Jonathan Smith
Mr. and Mrs. Paul Smith
Mr. Dan Swearingen
Mr. and Mrs. Tom Toldrian
Ms. Nancy Toney
Mr. and Mrs. William Walsh
Mr. and Mrs. Martin Weil
Mr. Michael Weil
Mrs. Roberta Weil
Mr. Scott Wirtz
Mr. Daniel Worthington

Dr. and Mrs. Peter Allen
AmazonSmile Foundation
ABLCAmerica's Best Local Charities
Mr. Robert A. Anderson
Mr. and Mrs. Wayne Anderson
Mr. & Mrs. Jason Araghi
Ms. Mary Jane Baird
Mr. and Mrs. Robert Gordon Ball
Mr. Gerry Barredo
Bassing Painting, Inc.
Ms. Laura Bertalli
Ms. Marilyn Bobbin
Mr. Robert Bonte, Jr.
Ms. Danielle Botros
Mr. and Mrs. Dirk Brinckerhoff
Ms. Quinn Brown
Mr. and Mrs. Keith Buchgnani
Mr. and Mrs. Brian Buddell
Mr. Peter Bull
Mr. Tony Burr
Mr. John Busick
Mr. Jerry Cahill
Ms. Lisa Ann Carbone
Mr. Roger Cassidy
Mr. and Mrs. Joe Cerreta
Mr. and Mrs. George Chammas
Mr. and Mrs. Sherman Chan
Mr. & Mrs. Calvin Chang
Mr. and Mrs. Brett Chun
Ms. Merrill Clarke
Mr. and Mrs. Brian Collins
Dr. and Mrs. Edward J. Collins
Ms. Nancy Conger
Mr. Edwin Conn
Colonel Bill Cope
Mr. and Mrs. David Costamagna
DeMello Roofing Inc.
Ms. Susan Dickson
Mr. John Double
Mr. and Mrs. Ray Douglas
Ms. Margaret Rose Duggan
Ms. Mary Duggan
Ms. Darby Duke
Mr. and Mrs. Brad Eberhardt
Ms. Lia Economopoulos
Mr. Eric Eisen
Mr. and Mrs. Marc Elias
Ms. Lisa Epstein
Escrip
Ms. Margaret Farman
Mr. Sean Fekete
Mr. and Mrs. John Feldmann III
Mr. Robert Fesler
Ms. Claire Flanigan
Ms. Margaret Flores
Mr. and Mrs. Tom From
Mr. and Mrs. Greg Garcia
Mr. Mike Germano
Mr. and Mrs. John Giosso
Mr. and Mrs. John Girtan
Mr. and Mrs. Rick Goldhoff

Mr. & Mrs. Richard Goldwasser
Goodshop
Ms. Anne Goyette
Ms. Elizabeth Grace
Ms. Irma Gray
Mr. and Mrs. Andrew Greene
Ms. Diane Grialou
Griffin-Phoenix Foundation
Ms. Mary Grover
Mr. and Mrs. Joseph Gualco
Mr. Richard Hall
Mr. Frederic Happy
Ms. Julianne Heliotas
Mr. and Mrs. Larry Hoffman
Mr. Stan Hoffman
Ms. Ruth Holmes
Mr. Jeffrey Horowitz
Ms. Patricia Jackson
Mr. and Mrs. William James
Ms Susan Kay
Mr. and Mrs. Robert Kearns
Ms. Eileen Kilgariff
Sophia Kingman
Ms. Kristin Kinney
Mr. Craig Kirkpatrick
Mr. and Mrs. David Kohnke
Ms Shirley Krohn
Mr. and Mrs. Tom Kunst
Mr. Huu La
Mr. and Mrs. Dan Larkin
Law Office of Craig Dykman
Mr. Kenneth Leeser
Ms. Susan Loftus
Ms. Janet Long
Mr. and Dr. William Lundergan
Mr. Seth Madnick
Ms. Rebecca Magaline
Dr. and Mrs. David W. Martin
Ms. Claudia Mazzoleni
Mr. Eddie Mazzoleni
Mr. & Mrs. William Mazzoleni
Mr. Chris McDavid
Mr. Rahul Mehta
Ms. Ann Marie Melanephy
Mr. & Mrs. Larry Molatore
Mr. Michael Molatore
Mr. & Mrs. Tory Monticello
Ms. Viola Morris
Ms. Margaret Moser
Mr. & Mrs. Terry Murphy
Mr. Frank Murray
Mr. and Mrs. Roger Nissim
Mr Will Noel
Ms. Katherine Normant
Mr. and Mrs. Mike Obley
Mr. & Mrs. John O'Brien
Ms. Kate O'Connor
Michael Olshan
Mr. and Mrs. Ralph O'Rear
Mr. Kris Ozaki
Mr. and Mrs. Mario Patane

Ms. Susan Peters
Mr. Matt Petri
Ms. Rosemary Phillips
Mr. & Mrs. Eric Plett
Mr. Phil Pollock
Mr. & Mrs. Frank Poon
Mr. and Mrs. Pete Press
Mr. and Mrs. Gary Price
Mr. and Mrs. William Raudio
Ms. Sue Reyneri
Mr. and Mrs. Mike Richardson
Mr. and Mrs. James Ricks
Mr. Stefan Rollins
Ms. Felicia Romero
Mr. Jeffrey Rosentreter
Ms. Dorreen Roth
Mrs Theresa Rutledge
Mr. Bill Schalich
Ms. Kimberly Schmidt
Ms. Betty Schrohe
Ms. Nancy Sheppard
Mr. Christopher Sheron
Ms. Katrina Sirdofsky
Mr. and Mrs. Craig Smith
Mr. Doris Smith
Mr. & Mrs. Dean Soiland
Mr. & Mrs. Howard Soriano
Mr. & Mrs. Mark Sturges
Ms. Elizabeth Sutton
Ms. Kam Tabari
Dr. and Mrs. Simrin Takhar
Mr. and Mrs. Stephen Tamborski
Ms Peggy Tatro
Mr. John Taylor
Mr. Mike Testa
Mr. and Mrs. Stephen Thal
Thirty-Seven Winery
Thompson Builders
Ms. Vivien Thorp
Ms. Zwielfelhofer Tina
Mr. and Mrs. Steve Tolleson
Dr. Marsha Treadwell
Mr. Ryan Tucker
Ms. Terry Ulin
Mr. and Mrs. Andrew Valla
Van Middle & Son Concrete
Mr. Vito Vanoni
Ms. Catherine Varnau
Mr. and Mrs. Samuel Vaughn
Mr. and Mrs. Kevin Waight
Ms. Susan Wandling
Mr. & Mrs. Christopher Warner
Ms. Penny White
Mr. and Mrs. Barry Wood
Mr. and Mrs. Tak Yamamoto
Mr. and Mrs. Bryant Young
Zenith Instant Printing
Zywave

EMERALD DONORS (\$100 to \$499)

Mrs. Rebecca Allen- Hyma
Ms. Diane Amato
Ms. Umma Amina
Ms. Kathy Amos
Ms. Natalia Andryushina
Mr. and Mrs. John Aranson
Ms. Clare Aranzazu
Mr. Dave Aver
Mrs. Ofelia Bacani, RN
Ms. Linda Baldwin
Mr. & Mrs. Leo Barclay
Mr. & Mrs. Bill Schalich
Ms. Suzie Basho
Mr. and Mrs. Louis Batmale
Mr. Bill Beagle
Ms. Margaret Bender
Mr. and Mrs. Charles Benet
Ms. Julianne Berry
Ms. Sally Bertrand
Ms. Erin Bertullo
Ms. Gemma Bianchi Pardini
Ms. Dally Biggio
Mr. David Biggs
Ms. Brittany Blackmore
Ms. Sarah Bobbin
Ms. Sebbie Bobbin

Dr. and Mrs. Martin Bogetz
Ms. Julie Botelho
Mr. Anthony Boyle
Ms. Jody Brazil
Ms. Kimberley Brennan
Mr. Tom Brennan
Mr. and Mrs. Mike Breslin
Ms. Tressa Breslin
Bridge Property Group
Ms. Sandra Brook
Mr. Andrew Brown
Mr. and Mrs. John Brydon
Mr. and Mrs. Doug Buttkie
Mr. and Mrs. John Caires
Mrs. Tara Duerson
Ms. Lisa Eckles
Ms. Antonia Ehlers
Ms. Kristina Eisenhower
Ms. Elizabeth Elias
Earl Farnsworth Express
Ms. Nancy Fase
Mr. Robert Fiedler
Ms. Erin Elizabeth Finnegan

Mr. Elliot Colyn
Ms. Cindy Condit
Mr. & Mrs. Walter Cuddy
Ms. Jessica Daugherty
Mr. & Mrs. Jonathan Davies
Ms. Sarah De Bel
Ms. Cathy Deikman
Ms. Carly Devich
Ms. April Mary Di Santo
Ms. Lauren Dodson
Ms. Jean Dolcini Chapman
Ms. Darlene Dolcini LaFranchi
Ms. Pam Double
Ms. Molly Dowd
Mrs. Jane Duerson
Earl Farnsworth Express
Ms. Cindy Guo
Ms. Lisa Hagel
Ms. Anna Haight
Mrs. Walter Hall
Mr. Bob Hallbeck Sr.
Ms. Heather Hammerich
Mr. Fred Harmon
Ms. Heather Hawkins
Ms. Kate Heard - Zeryny
Ms. Susan Heskett
Mrs. Jeanette Hill

Mr. Chris Hoffman
Mr. James Hoffman
Mr. Terri Holmes
Ms. Suzie Hopkins
Mr. Eddie Hsu
Mrs. Catherine Hubbard Ross
Mr. Luis Perez
Ms. Andrea Mason
Mr. John Irvine
Ms. Karen Irvine
Mr. H Paul Johnson
Mr. John Kalb
Mr. and Mrs. Roger Kirk
Ms. Alison Kjeldgaard
Ms. Belinda La
Ms. Diana La
Mr. Dave LaDuke
Ms. Diane Lavio Rowley
Law Office of Marlene P. Getchell
Ms. Judi Lelmorini
Dr. and Mrs. Jay Leopold
Mr. Edison Lewis
Mr. and Mrs. Nick Litanio
Mr. Robert Lonergan
Ms. Amanda Lopez

Gabriel de Balmann
Yves & Connie de Balmann

Frida & William Chayes
Jane & Terry Murphy

Chuck Collins
Frederic Happy

Dan, DeReath, & Craig Collins
Chip & Sylvia Collins

Julie De Voto
Terry & Chrissy De Voto
David & Lori Kohnke

Scott Double
W. John Double

Lily Ehmann
Peter Bull

Melissa Escobar
Ofelia Bacani

Jason Fesler
Dr. & Mrs. Morrison

Guido & Pierina Giosso
John & Patricia Giosso

Nancy & Allan Herzog
Roger Odenberg
Cathleen McCafferty

Jaryd Kalb
Elizabeth & Suzie
Zenith Instant Printing

Lifehouse Staff
Yves & Connie de Balmann
Ken Leeser & Andrea Blum

Randall Martin
Charles & Debbie Martin

The Mizany Family
The Tabari Family

Nancy Dow Moody
Kate O'Connor & Michelle Condit

Kate O'Connor
Michael Richardson

Pam Oncina
Anne Taylor

Kyle Quick
Darby Mae Duke

Tracy & Gene Reddig
Andrea Pino

Ben Sall
Martin & Karen Bogetz

Brian H. Sancimino
Stephen & Robin Sancimino

Sean Saylor
Jeanne Friedel
Anna Haight
Michele McGuinness
Stefan Rollins
Beverly Shwert

Mark Schatzberg
Theresa, Tony & Cyndi at Merrill Lynch

Devin Smith
Jonathan & Sydney Smith

Joseph Spinelli
Wayne & Kerry Anderson

Hayes Wilsey
Darby Mae Duke

Julie De Voto
Terry & Chrissy De Voto
David & Lori Kohnke

IN HONOR OF

IN MEMORY OF

Craig Collins
Janet Long

Ping Demo
Doug & Judy Buttkie
James & Stephanie Clahan

Dina Demo
James & Stephanie Clahan

Tommy De Voto
David & Lori Kohnke

Steven R. Douglas
Ray & Ning Douglas

Willa Duggan
Louis & Therese Batmale
Byron, Tisha, Evan & Emma Chinn
Susan Dickson
The Duggan, Bryant, Caselli & Satarian Families
Diane Grialou
Dennis & Terese Moriarty
Jerry & Lynne Richardson
Jami & Teresa Shiner
Jack Sullivan

Jennifer Anne Essick
David & Carol Essick

Keith Grady
James & Stephanie Clahan

Andrew Greene
Mary Greene

John G. Kalb
Virginia Kalb

David Murray
Frank Murray

George Schrohe
Betty Schrohe

Steven Spinelli
Dr. S.S. Takhar & Amrit Takhar

United Nations Day of People with Disability
Bryant & Betsy Young

Kendra Young
Bryant & Betsy Young

Ms. Janis Olvarado
Mr. Samuel Ortega
Mr. Lance Padilla
Ms. Nan Paget
Ms. Liza Palter
Mr. Ken Peralta
Mr. Luis Perez
Mr. Roger Perry
Ms Christine Peterson
Mr. Stephen Phillips
Ms. Toni Pimentel
Ms. Andrea Pino
Ms. Stephanie Platt
Ms. Patty Pomi
Mr. Masele Poueu
Ms. Laura Praszker
Mr. Scott Pressman
Mr. Alan Probert
Mr. Charles Rapp
Mr. Ernie Rea- Romero
Dr. and Mrs. Joel Renbaum
Mr. & Mrs. Jerry Richardson
Ms. Meg Robertson
Ms. Manuela Rohr
Ms. Ellen Root
Ms. Joyce Rovang

Mr. Colin Russell
Mr. Sabin Russell
Mr. Noe Salazar
Mr. Samuel Salazar
Ms. Kathi Sanchez
Mr. and Mrs. Steve Sancimino
Ms. Debbie Sandberg
Miss. Maggie Sartor
Ms. Patricia Schermerhorn
Ms. Johanna Schleret
Mr. and Mrs. Alfred R. Schmidt
Ms. Bernadette Segura
Mr. Jonathan Shapiro
Ms. Judy Shay
Mr. Philip Sheridan
Ms Teresa Shiner
Mr. Harry Shulman
Ms Beverly Shwert
Ms. Joy Sidon
Sienna Rose
Ms. Claudia Silva
Mr. Cory Silva
Mr. Chris Silveira
Ms. Corie Simpson
Ms. Allison Smalling
Ms. Christine Smith

Ms. Sally M. Spencer
Ms. Kathleen Spindler
Ms. Brittany Stewart
Ms. Linda Stone
Mr. Keith Strange
Ms. Jessica Susick
Ms. Valerie Tammes
Ms. Bette Tedford
Ms. Patsy Terzian
Mr. Kirk Thole
Mr. Zachary Thurston
Mr. and Mrs. Chris Toney
Ms. Nancy Truman
Ms. Cheri Tunzi Carney
Mr. and Mrs. Arnold Valcour
Ms. Melody Velardi
Mr. Randall Vogel
Ms. Marideth Waight
Mr. and Mrs. Cole Weil
Mr. Ozro West
Mr. and Mrs. Thomas White
Ms. Linda Williams
Mr. & Mrs. Steve Wilsey
Mr. Richard Wolf
Ms. Joan Wright
Ms. Susan York

OPAL DONORS (up to \$99)

15
SP 2019

INKIND DONATIONS

20/20 Optical
Alana's Cafe
Amici's East Coast Pizzeria
Artesa Vineyards & Winery
Barber Cellars
John Baum
Bell Wine Cellars
Bette's Oceanview Diner
Cache Creek Casino Resort

Cakebread Cellars
Carmel Bach Festival
Castello di Amorosa
Caymus Vineyards
Charles M. Schulz Museum
Donsuemor
Elan Fitness Center for Women
Elements Massage
Fillmore & Western Railway

Fisher's Cheese & Wine
Gaspars
Gloria Ferrer Caves & Vineyards
Golden Gate Bridge Highway & Transportation District
Mr. & Mrs. Alan Hoover
Markham Vineyards
Hotel Kabuki
Indian Valley Golf Club

Iron Springs Pub & Brewery
Kayak Connection
Korbel Champagne Cellars
Ms. Esther Lee
Little River Inn Resort and Spa
Lowell Observatory
Markham Vineyards
Mission Cliffs
Moraga Country Club

The New Parkway
Osher Marin Jewish Com. Center
Pacific Locomotive
Association, Inc.
Pelo Fitness
Planet Granite
Rialto Cinemas
Robert Foley Vineyards
Rocknasium

S.F. Bay Adventures
San Francisco Wine Group
Sea Trek LLC
Seaplane Adventures
Simplicity: Holistic Body Care
Paul Smith
Sorella Caffè
Sorensen's Resort
St. Francis Winery & Vineyards

Stapleton School of the Performing Arts
SusieCakes
The Crucible
The Outdoor Art Club, Inc
Twin Pine Casino & Hotel
Weathertech Raceway Laguna Seca
Mr. Michael Welch

Winchester Mystery House, LLC
Wine & Roses Hotel,
Restaurant & Spa
Wine Country Cyclery
Winter's Hill Estate
Yogaworks

SOCIAL



@lifehouseagency

Get social with us as we celebrate
65 years of supporting people with
developmental disabilities

#lifehouseagency
#livingmybestlife
#gcw2019
#lifehouselegacy
#lifehouse65

ATTEND

| | |
|--------------------|-------------------------------------|
| 1st Saturday Night | Novato Youth Center (monthly) |
| 3rd Friday Night | Rec, Inc. Dance, Larkspur (monthly) |
| April 13, 2019 | Great Chefs & Wineries |
| October 25, 2019 | Awards Banquet |
| December 16, 2019 | Holiday Party |

SUPPORT

Donate
lifehouseagency.org/donate

Be a Community Sponsor
lifehouseagency.org/ways-to-help

Planned Giving: Help Us Build a Sustainable Future
lifehouseagency.org/donate

Support Us when you Shop Online
lifehouseagency.org/ways-to-help

LIFEHOUSE NEWS

President + CEO
Nancy Dow Moody

Director of Finance
Viola Morris

Director of Development
Ann Elias

Director of Programs + Operations
Kate O'Connor

Director of Programs + Operations
Michelle Condit

Director of Human Resources
Johanna Schleret

Editors + Designers
Nancy La,
Executive Assistant to the CEO

Jennifer Waight,
Communications +
Marketing Specialist

Marin Office
899 Northgate Drive
Suite 500
San Rafael, CA 94903
P: 415.526.5300
F: 415.472.5739
mail@lifehouseagency.org

North Bay Office
6050 Commerce Blvd.
Suite 105
Rohnert Park, CA 94928
P: 707.586.1961
F: 707.586.0919
mail@lifehouseagency.org